

Enhanced

IDEAL LIFT Enhanced

To any prestigious building the *Enhanced* lends elegance and distinction. Hotels and leisure facilities, offices and retail outlets can all benefit from the luxury and finesse of these superb lifts.



Styling features:

- Suspended 3 panel powder coated ceiling with 9 spot downlighter effect.
- Elegant full height profiled stainless steel operating console with edge trim in polished stainless steel. Illuminated data panel and pushes which are illuminated white until pushed, when they become illuminated red. An adjustable buzzer indicates operation to persons with impaired vision.
- Wall panels available in a superb range of laminates. Specialist coloured glass is available as optional extra, as is stainless steel or ready for carpeting by others.
- Range of tubular handrail options available including stainless steel, solid wood or powder coated steel.
- Satin stainless steel corner profiling and protective skirting.
- Range of floor covering including wood or slate effect PVC flooring, vinyl stud tiles or carpet by others.
- Half height mirror to rear wall as standard (recommended as an aid to unaccompanied wheelchair users).
- Car door and front panels in satin stainless steel.
- Vinyl skin plate landing doors and surrounds.
- 3-hour emergency lighting.
- Lift Autodial System with induction loop (3-stage emergency voice communication).
- Digital lift car position and 'direction of travel' indicator.
- Voice annunciator.
- Full height door detector.
- Direction of travel arrows and gongs in car front panel.
- Meets the requirements of the DDA and complies with EN81-70.



Enhanced
An example of a typical interior

Enhanced



Enhanced Lift Car Interior: Standard Finish

SIDE & BACK WALLS

Laminate wallboards - see separate sheet for full range available

CORNER PROFILES, SKIRTING, FRONT WALL PANEL & HEADER AND CAR DOORS

Satin stainless steel

CONTROL CONSOLE

Full height in satin stainless steel

CONSOLE EDGE TRIM

Polished stainless steel

HANDRAIL

Satin stainless steel to side or rear wall

CEILING

3 panel powder coated (from any colour in our range) 9 spot suspended downlighter effect *or*

Conventional 6 spot suspended downlighter in white powder coated

Recessed for finishing by others

FLOOR

Half height silvered to rear wall

MIRROR

Light Grey vinyl skin plate

LANDING DOORS, LANDING ARCHITRAVE & HEADER

DIGITAL DISPLAYS & BUTTON ILLUMINATION

Red



Range of laminate wallboards



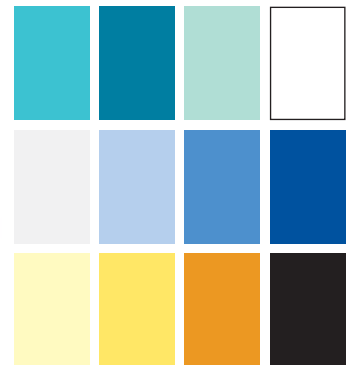
Optional blue DDU



Ceiling - standard



Ceiling - option



Optional specialist glass for walls

Options available at extra cost:

SIDE & BACK WALLS

Specialist coloured glass wall panels, stainless steel or ready for carpeting by others

CEILING

Finished in satin stainless steel

HANDRAIL

Dark Grey, Black, White, Blue or Red powder coated with satin stainless steel ends
Solid wood rail with satin stainless steel ends
Polished stainless steel ends with any rail

FLOOR

Black, Dark Grey or Light Grey vinyl stud floor tiles or Wood or Slate effect PCV flooring

MIRROR

Half or full height on any wall

DIGITAL DISPLAYS & BUTTON ILLUMINATION

Blue

LANDING DOORS & FRAME

Satin stainless steel

Standard handrail in stainless steel



Optional polished stainless steel handrail end



Optional flooring



Light Oak



Dark Oak

Solid wood handrails



Blue



Red



White



Dark Grey



Black

Optional powder coated handrail

Handrail configurations



Standard

or



Extra cost option



Through car Standard



Through car Extra cost option



Adjacent entrances Standard



Adjacent entrances Extra cost option

Due to our policy of continuous development and improvement, we reserve the right to alter specifications and dimensions without prior notice.